

LEGEND

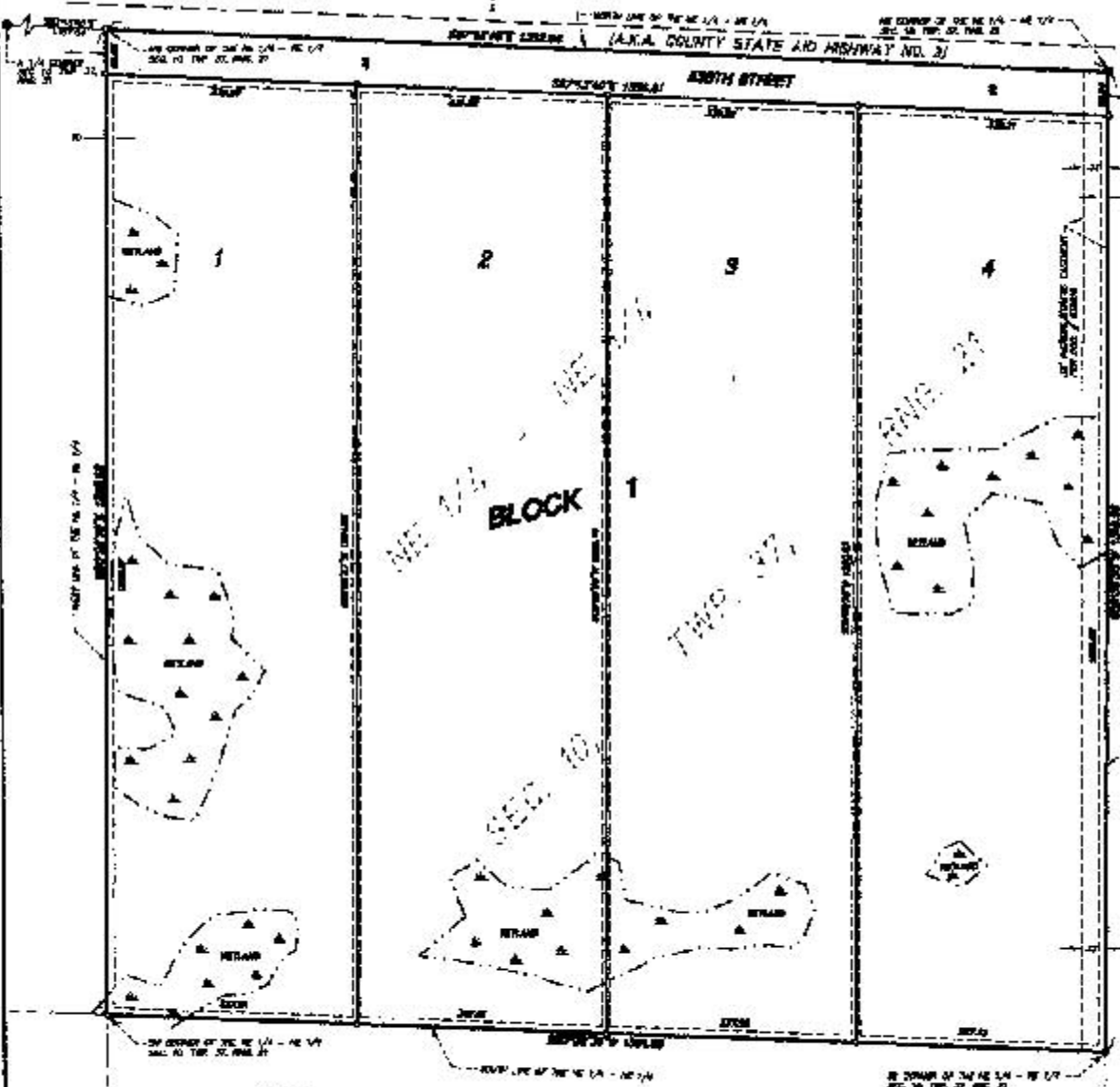
- DENOTES CHICAGO COUNTY MONUMENT
- DENOTES SET HIGH PIPE WITH PLASTIC CAP MARKED P.L.A. NO. 18281

GRAPHIC SCALE



RUSH PARK

SECTION 10



INDEX MAP
Section 10, T.37, R.21
Chicago County



"NO SCALE"

Drainage & UPRY
placements are shown below:



Being 10 feet in width and adjoining street and rear lot lines and 5 feet in width and adjoining side lot lines unless otherwise shown.

WETLAND NOTE

The Illinois Department of Natural Resources, United States Corps of Engineers and other state responsibility agencies have independent surface wetlands maps on file administered by Chapter 261.05. Subsection 1 of Wetlands Statutes and they may be shown herein. Determination of land suitability with wetlands may be subject to special conditions or restrictions.

ADJUSTED AREA

For the purpose of this plat, the North line of the NE 1/4 of the NE 1/4 of the NE 1/4 of Sec. 10, T.37, R.21, is assumed to bear true at 87 degrees 13 minutes 40 seconds East.